

32JXE30K/31ZY51G

Φ32 行星减速器, 允许转矩范围: 0.3N.m~3.0N.m

32mm OD Planetary Gearbox,

Permissible Load Range: 0.3N.m~3.0N.m



电动机主要技术参数 Motor Technical Data

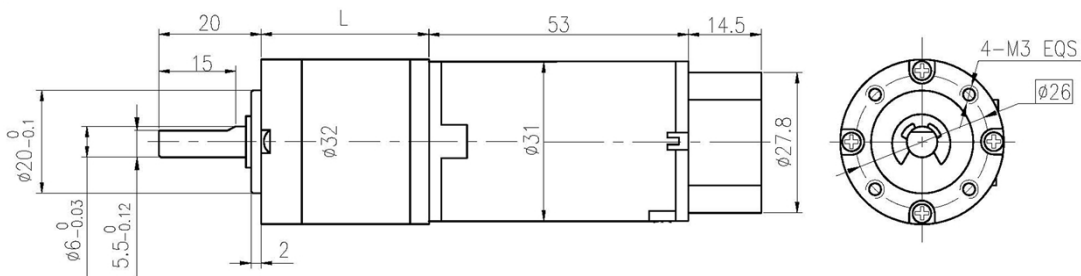
电机型号 TYPE	额定电压 Rated voltage VDC	空载转速 No-load speed r/min	空载电流 No-load current mA	额定转速 Rated speed r/min	额定转矩 Rated torque m. Nm	输出功率 Output power W	额定电流 Rated current mA	堵转力矩 Stall torque m. Nm	堵转电流 Stall current A
31ZY51G-2450	24	5000	75	3830	25	9.8	570	106.8	2.3

齿轮减速电机主要技术参数 Gear Motor Technical Data

配置 31ZY51G-2450 直流电机 (31ZY51G-2450 DC Motor)

减速比 Reduction ratio	3.7	5.2	14	19	27	51	71	100	139	181	219	254
减速级数 Number of gear trains	1	1	2	2	2	3	3	3	3	4	4	4
减速器长度(L) Length(L) mm	25.7	25.7	32.8	32.8	32.8	39.7	39.7	39.7	39.7	46.6	46.6	46.6
空载转速 No-load speed /min	1351	962	357	263	185	98	70	50	36	28	23	20
额定转速 Rated speed r/min	1035	737	274	202	142	75	54	38	28	21	17	15
额定转矩 Rated torque N.m	0.083	0.117	0.284	0.385	0.547	0.929	1.294	1.823	2.533	2.969	3.592	4.166
最大瞬间允许负载 Max. permissible load in a short time N.m	1.0	1.0	3.5	3.5	3.5	7.5	7.5	7.5	7.5	9	9	9

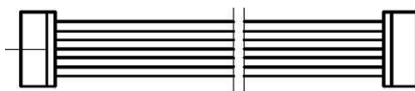
外形和安装尺寸 Dimensions



配置磁编码器 Magnetic Encoder

Model: CBM28-3 2channels, CW/CCW, 3PPR

Flat cable length 250mm



1. MOTOR-
2. MOTOR+
3. HALL SENSOR Vcc
4. HALL SENSOR GND
5. HALL SENSOR A Vout
6. HALL SENSOR B Vout